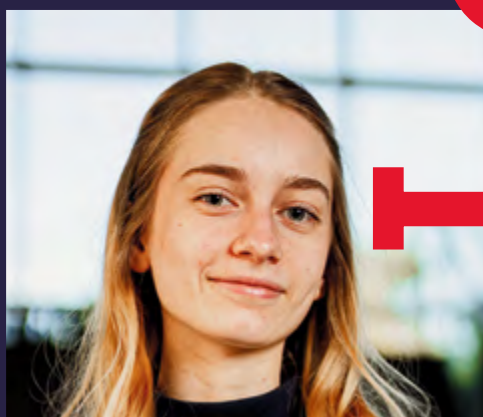




St. Lawrence
CEGEP CHAMPLAIN

VIEWBOOK 2025—26



Leader.

- 02** Détails clés (en français pour parents)
- 04** St. Lawrence at a glance
- 06** Sociocultural life at the college
- 10** Sports at the college
- 14** Student Success Plan
- 15** Student Services
- 16** Plan your college studies
- 18** 200.B1 Science Program
- 20** 300.A1 Social Science Program
- 24** 500.AL Arts, Literature and Communication (ALC) Program
- 26** Double DEC
 - 27** 200.17 Science + Social Science
 - 28** 200.18 Science + ALC
 - 29** 300.16 Social Science + ALC
- 30** 410.B0 P.W. Sims Business Program
- 34** 414.A0 Tourism Program
- 36** Continuing Education
- 38** How to apply
- 40** 081.06 DEC Pathway



Sois futé. Choisis St.Lo!

Cegep Champlain – St. Lawrence est le seul cégep anglophone public dans la région de Québec. Nous offrons une approche pédagogique personnalisée et nos étudiants développent rapidement un fort sentiment de communauté.

Une expérience unique

- + Nos groupes-classes sont de **26 étudiants en moyenne**; nous connaissons bien nos étudiants. Nos professeurs offrent une grande disponibilité à l'extérieur de leurs heures d'enseignement.
- + Nous offrons des **ateliers d'aide animés par les professeurs dans plusieurs disciplines** et un système de tutorat des pairs bien établi.
- + Par une telle attention portée à leurs besoins, **les étudiants se démarquent, entre autres, par leurs résultats académiques**. À l'automne dernier, plus de **29 % des étudiants ont figuré soit sur la liste d'honneur du doyen** (pour une moyenne de 90 % ou plus), ou sur la liste honorifique (pour des moyennes se situant entre 85 % et 89,9 %).
- + **Plus de 70 %** de nos étudiants proviennent d'écoles secondaires francophones.

Votre réussite est la nôtre.

La cote R à St. Lawrence (cote de rendement au collégial) des 5 dernières années :

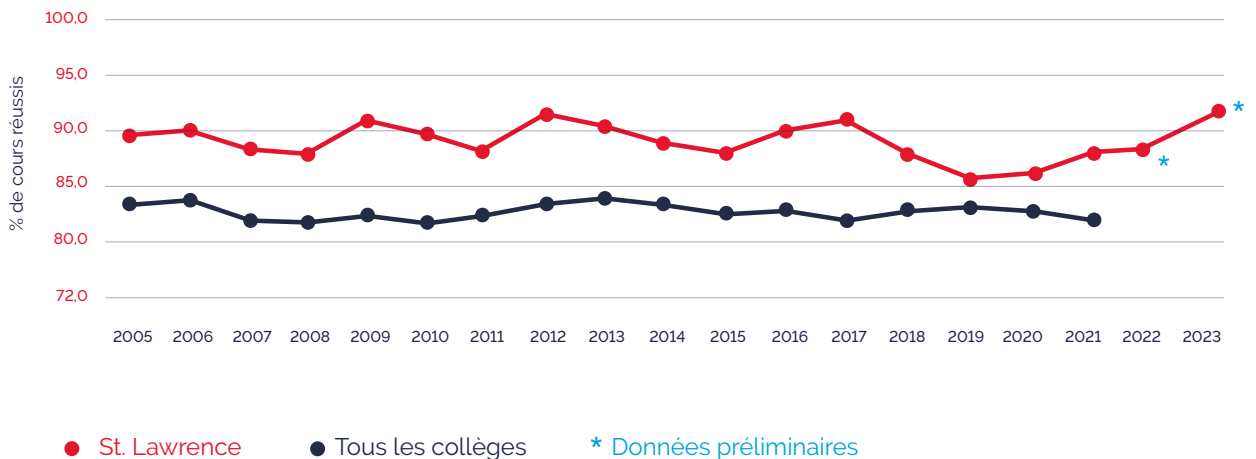
La cote R de nos diplômés :

- + 72,2% \geq **28**
- + 52,4% \geq **30**
- + 14,3% \geq **34**

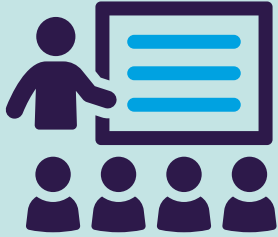
Comparaison des cotes R des étudiants admis dans les universités du Québec :

- + Moyenne des diplômés de St. Lawrence (la plus élevée dans la région) : **31,2**
- + Moyenne de la Capitale-Nationale : **28,5**
- + Ensemble des collèges : **28,8**

Taux de réussite au premier semestre



O ERVIEW



ONLY **963**
students

we're a small community,
where you'll feel right
at home

97%

of recent alumni
say "if I had
to do it again,
I would choose
St. Lawrence"

6

provincial
hockey
champion-
ship wins



11,875+



alumni

14

programs
and profiles

25%



of students are involved in a club or student group

7

sports played by our college teams



Nearly

200

student athletes

Around

20

student groups and clubs



Our student delegates received an honourable mention at the 2024 New York Model United Nations



Around **15,000** physical books and references in our library and nearly **6 Million** ebooks

Around **25,000** visits to the library each month

Over

25

restaurants and cafés just a short walk from the college



10,000 honeybees living in a hive on our campus

The Jeffery Hale Student Centre provides a home base that enriches your college experience.



Socio-cultural



Get involved in socio-cultural & community activities

Getting involved is a great way to facilitate your integration into College life.

As part of a desire to promote diversity, inclusivity, and student development, St. Lawrence offers a wide variety of socio-cultural and extracurricular activities. By joining our clubs and organized activities, you will make new friends, develop your passions and discover new talents.

- + Activités culturelles en français du RIASQ ex : Cégep en spectacle, Marathon d'écriture, intercollégial de théâtre
- + Art and Crafting Club
- + Eco St. Lo and hydroponic garden
- + ESports
- + Entrepreneurship Club
- + Fashion Show
- + Geeks and Gamers Club
- + Health and Wellness Club
- + Hema Quebec Blood Drive
- + French Improv Team
- + Intercultural Club
- + LGBTQ+ Club
- + Multimedia and Photography Club
- + Political Science & Debate Club
- + Proto St. Lo (STEM club)
- + SLC Radio
- + SLC Student Association
- + SLC United
- + Student Newspaper – The Lion's Log
- + Theatre Troupe
- + Student Band - What the Heck

St. Lawrence is a proud member of several networks that offer French cultural activities for our students:

- + Association des clubs d'entrepreneurs étudiants du Québec (ACEE)
- + Québec City Intercollegiate Collaboration in Entrepreneurship
- + Projet d'éducation entrepreneuriale au collège (PEEC)
- + Réseau intercollégial des activités socioculturelles du Québec (RIASQ)

At St. Lawrence, STUDENTS are the centre of our priorities. This is why we believe that being involved in our different activities will allow our students to develop autonomy and cooperation skills.

Want to add your flavour to St. Lawrence student life? We are always open to new ideas. Visit our website for more information. Get involved!

Be enterprising

St. Lawrence offers many opportunities for students to develop their entrepreneurial skills.

Entrepreneurship Club

The St. Lawrence Entrepreneurship Club (SLEC) is one of the most active and dynamic clubs in the Cegep network. Furthermore, St. Lawrence is a proud partner of many local and regional activities that promote entrepreneurship through the college network.

Kickstart SLC

Thinking of starting your own business? You have a great idea but don't know where to start? Kickstart SLC is a business start-up service that encourages, supports and helps students launch their own businesses while pursuing studies. Students can get financial support and take advantage of a vast network of entrepreneurs and professionals who volunteer to mentor and guide. Take the first step and team up with Kickstart SLC! kickstartslc.com

Bloom Communications

By joining Bloom, you can grow your network, build your resume, and earn some money in a fun and stimulating environment. Our goal is to provide high-quality services and bring a fresh and creative outlook to our clients' projects. Bloom is run by students with the help of experienced mentors.

Contests

Many contests are available for entrepreneurship projects, such as *Launch your Idea!* in November and *OSEntreprendre* in March. Students can apply in 2 different ways: innovation projects and business idea. All students can apply and winners receive bursaries. osentreprendre.quebec



Involvement





Pride
Fun
Victory



LIONS



**Commitment
Teamwork
Achievement**

Take pole position

Orléanne Halasz
Social Science student
Volleyball player



Be part of the Lion Pride

St. Lawrence has a tradition of excellence in athletics. We take great pride in preparing student-athletes for a broad range of opportunities in academics and sports at the university level.

Our Mission

- + St. Lawrence Lions sports teams are a source of great pride for the college. Our mission is to provide a high standard of play and development for athletes committed to achieving their true potential.

Our History

- + For over 45 years, the SLC Lions Athletics program has given student-athletes the opportunity to reach their potential in both academic and athletic realms, in college and at university. Among the program's objectives is the importance placed on developing Leaders: academically, personally, and athletically.
- + Nearly 200 athletes wear our team colours each year – over 20% of the student population is involved with one of our varsity teams. St. Lawrence is a proud member of the Réseau du sport étudiant du Québec (RSEQ), and the Canadian Collegiate Athletic Association (CCAA).

Our Values

- + By joining our Lions sports program, you will develop skills to help you succeed in life, such as autonomy, teamwork, accountability, and respect. Through sports, we want to promote the values of commitment, pride, fun, and achievement.

Our Teams This Year

WOMEN'S TEAMS:

- + Women's Golf Division 1
- + Women's Basketball Division 2
- + Women's Soccer Division 2
- + Women's Volleyball Division 2
- + Women's Basketball Division 3
- + Women's Cross-Country
- + Women's Tennis

MEN'S TEAMS:

- + Men's Hockey Division 1
- + Men's Golf Division 1
- + Men's Basketball Division 2
- + Men's Cross-Country
- + Men's Tennis



Succeed with Us

St. Lawrence's Student Success Plan shows our commitment to helping you achieve success in all areas, not just in the classroom. The plan focuses on four main areas:

ORIENTATION

1

Success Beyond Grades

Does your definition of success include winning the championship, volunteering more, or finally writing that poem? We recognize that your accomplishments reach far beyond your studies.

ORIENTATION

2

Monitoring Success College-Wide

We want to know what our students are achieving, and how. We're putting systems into place that will help us to better do that.

ORIENTATION

3

A College Full of Support

We strive to provide great academic support to students beyond the classroom, so everyone can achieve their full potential.

ORIENTATION

4

A Fruitful and Dynamic Pedagogical Life

The heart of the college is the classroom, so we're working harder than ever to make our classes richer and more rewarding.

Student Services

Our excellent Student Services are here to help you on your college journey.

Academic Advising

Academic Advisors can help with course registrations and schedule modifications. They also monitor your achievement and can offer suggestions to make things easier for you. If you're having difficulties, would like to be matched with a tutor, or are looking to learn new study skills, these are the people to ask.

Guidance Counselling

Our Guidance Counsellor is here to help you with your changing needs throughout your Cegep studies. She can help you reflect on your interests, values, and skills, and guide you as you make decisions about your academic trajectory and career path. She can also connect you with resources to explore the possibilities for your future.

Adapted Services

If you require accommodations or other assistance due to a learning disability, mental health issue, physical limitation, or other special need, Adapted Services is here to help. They can meet with you to assess your needs and provide individualized support to help you do your best.

Wellness Services

When you're struggling with family or relationship issues, questions of identity, or mental illness, you might want to meet with our Social Worker. She also manages projects that promote wellbeing at St. Lawrence, from pet therapy to the new Pathfinders program, where you can meet with upper-year students to ask any questions you might have about the College.



Student Activity Counselling

If you're a student-athlete or involved in sociocultural life at the college, you'll likely get to know our Student Activity Counsellors. They work to keep college life dynamic by supporting sports and sociocultural initiatives. These are the people to speak with if you'd like to join a student group or a Lions sports team.

Plan your studies

We have a variety of regular day programs leading to a Diploma of College Studies (DEC):

Pre-University programs (two years)

- + Science program
- + Social Science program
- + Arts, Literature and Communication program (ALC)

Pre-University double DEC's (three years)

- + Double DEC in Science + Social Science
- + Double DEC in Science + Arts, Literature and Communication (ALC)
- + Double DEC in Social Science + Arts, Literature and Communication (ALC)

Career programs (three years)

- + P.W. Sims Business program
- + Tourism program (bilingual joint program with Cegep Limoilou)

DEC Pathway (Transitional Semester Leading to a DEC Program)

We also offer a growing number of programs and courses through Continuing Education,

More information on our programs is available on our website at slc.qc.ca.

Impact of Law 14 on French language in English colleges

If you are eligible to attend English school under the Charter of the French language and are in possession of a certificate granted by the Ministry of Education, you are considered a Certificate Holder. As of Fall 2024, your course sequence will depend on which of the following groups you fall into:

1. Certificate Holders
2. Certificate Holders who are proficient in French
3. Non-Certificate Holders

For detailed course sequences, visit the program pages on our website.

General Education Courses

Students in regular day programs leading to a DEC in the province of Québec take general education courses common to all programs. During Cégep, students take English courses, French courses, Humanities courses, Physical Education courses and complementary courses outside a student's field of study. The number of courses of each type depends on the student's status with regards to Law 14.

St. Lawrence offers many types of physical education and complementary courses. You're sure to find one that catches your eye.

Physical Education Courses

A wide range of physical activities and approaches is offered in our three Physical Education courses. The following activities have been offered in recent years :

- + Athletic Excellence (for elite athletes)
- + Badminton
- + Basketball
- + Cross-Country Running
- + Cross-Training
- + General Fitness
- + Golf
- + Hiking
- + Rock Climbing
- + Soccer
- + Spinning
- + Stress Management
- + Team Sports
- + Volleyball
- + Winter Camping
- + Winter Outdoor Sports
- + Yoga

Complementary Courses

Your choices will vary, based on your program and on what is offered each semester, but some of your choices may include:

- + Art and Aesthetics: Drawing
- + Art and Aesthetics: Painting
- + Astronomy
- + Business Law
- + Career Planning
- + Computers Today
- + Creative Writing
- + CSI St. Lawrence (Crime Scene Investigation)
- + Environmental Economics
- + Fondements de la langue française
- + Geography of World Development
- + German
- + History of Sexuality, Women and Family in the Western World
- + The Human Body
- + International Relations
- + Introduction to BusinessWorld
- + Introduction to Indigenous Cultures
- + Introduction to Macroeconomics
- + Introduction to Politics
- + Introduction to Psychology
- + Introduction to Sociology:
The Individual and Society
- + Introduction to Sustainable Development
- + Journalism and New Media
- + Marketing
- + Mental Health
- + The Science of Science Fiction
- + Sociology of Media and Popular Culture
- + Spanish

Merrick Marshall
Pure & Applied Science student
President and Founder, Proto St-Lo

Run the show



Science program

Our Science program prepares you for success in scientific and other fields at the University level. During your studies, you will have the opportunity to study with highly qualified faculty and work in well-equipped laboratory facilities.

Your future

Your studies can lead to a wide range of study opportunities and careers, including:

Health Science

- + Audiology
- + Dentistry
- + Kinesiology
- + Medicine
- + Microbiology
- + Nursing
- + Nutrition
- + Occupational Therapy
- + Optometry
- + Pharmacy
- + Physiotherapy
- + Veterinary Medicine

Pure & Applied Science

- + Actuarial Sciences
- + Architecture
- + Biochemistry
- + Biology
- + Chemistry
- + Computer Science
- + Engineering
- + Geology
- + Geomatics
- + Mathematics
- + Physics

Our profiles

Your choice of profile depends on the admission requirements of the university program to which you wish to apply. It is easy to move from one profile to the other, because all of the courses in the first year of the Science program and most of those in the second year are the same. In the second year, the option courses that you choose will determine your profile.

A comparison of the second-year Science concentration courses for our two profiles is shown below:

200.B5

Health Science profile

- + Science Program essentials: courses in Biology, Chemistry, Physics, Math and Programming
- + Human Physiology
- + Organic Chemistry
- + IA option course (see website)

200.B6

Pure & Applied Science profile

- + Science Program essentials: courses in Biology, Chemistry, Physics, Math and Programming
- + 2 science and/or math option courses (see website)
- + IA option course (see website)

> Learn more



Want to apply?

Students must satisfy the college general admission requirements and have the following pre-requisites:

- + TS 5 or SN 5 Math
- + Chemistry
- + Physics

Call the shots

Bon Pham
Social Science student
President, Hydroponic Garden Club



Social Science program

Our Social Science program allows you to study the many facets of humans, including our minds and bodies, as well as our interactions with each other and the world around us, both today and in the past.

Our program

Your exploration of social science will be guided by highly qualified faculty from such disciplines as:

- + Administration
- + Economics
- + Geography
- + History
- + Political science
- + Psychology
- + Sociology

In addition, you can select your profile, courses and projects, in order to study areas of special interest.

Flip the page to learn more about our profiles.

We have advanced standing agreements for students who wish to pursue their BAC in sociology or political science at Université Laval.

> *Learn more*



Want to apply?

You must satisfy the college general admission requirements. If you choose the Commerce profile (400.A3) or the Mathematics profile (400.A4), you must have the following pre-requisite:

- + TS5 or SN5 Math

Your future

Your studies can lead to a wide range of academic opportunities and careers, including:

- + Business Administration
- + Commerce
- + Communications & Journalism
- + Counseling
- + Criminology
- + Economics
- + Education
- + Geography
- + History
- + Industrial Design
- + Industrial Relations
- + International Business
- + International Relations
- + Law
- + Political Science
- + Psychology
- + Social Work
- + Sociology
- + Tourism
- + Urban Studies



300.A1 Social Science program

Our profiles

St. Lawrence offers six program profiles leading to a DEC in Social Science. All profiles have common elements, but they differ in emphasis and admission requirements. To some extent, the profile that you choose will be determined by the university program that you wish to enter.

300.AD Discovery profile

This profile offers the widest variety of Social Science courses and the greatest flexibility. It is intended for students who wish to discover social sciences and explore their options.

300.AP Psychology, Society & Health profile

This profile places an emphasis on studies oriented toward the helping professions, such as psychology, social work, counselling and criminology. It includes courses in human biology and advanced quantitative methods, required for admission to psychology programs at Québec universities. Other courses specific to this profile are *Introduction to Sociology, Social Science and Health*, and a psycho-social second-year course.

300.AW World profile

This profile will allow students to explore world issues. During their studies they will be exposed to various social and cultural realities in order to prepare them for travel to a foreign destination as a final semester course. Other courses specific to this profile are *Introduction to Geography* and *Introduction to Politics*, as well as *Living in an Intercultural World: Tools for Fruitful Intercultural Interactions*, a language complementary course, and a second-year course with an international perspective.

300.AJ Social Justice & Leadership profile

This profile focuses on issues of social justice, community engagement and leadership. An applied course in their final semester will get students involved in the community. Other courses specific to this profile are *Introduction to Sociology* and *Introduction to Politics* and a second-year course exploring social justice themes.

400.AM Discovery with Mathematics profile

Students who wish to explore a variety of social science disciplines while pursuing an interest in mathematics might consider the Mathematics profile. This profile also increases the number of university programs available. Courses specific to this profile are *Differential Calculus*, *Integral Calculus* and *Linear Algebra and Vector Geometry*.

400.AC Commerce Profile

This profile is aimed at students interested in the business world, commerce and economics, and ensures they obtain the pre-requisites for university studies in business administration such as *Microeconomics* and the three mathematics courses. It also includes *Introduction to Business*. Students who would prefer to study many non-business fields before beginning university should consider this profile in the Social Science program. Students who would prefer to focus on business studies at CEGEP should consider our three-year P.W. Sims Business program.

All our profiles include the following seven courses required by the government :

- + Successful Academic Methods (SAM)
- + Introduction to Global History from the 15th Century to the Present
- + Introduction to Psychology
- + Introduction to Macroeconomics
- + Quantitative Analysis in the Social Sciences
- + Qualitative Methods in the Social Sciences
- + Integrative Activity (IA), to be taken in the last semester

Stay on track

Jacinthe Côté
Arts, Literature and Communication
and Social Science Double DEC student



Arts, Literature & Communication

In the ALC Program's Multidisciplinary Option, you will explore the themes of Culture, Creation, and Expression.

Our program

There are many reasons to choose the ALC program. You can:

- + Develop proficiency in Spanish
- + Master both written and spoken English and French
- + Gain insight into national cultural issues from both English and French perspectives
- + Acquire confidence and effective public-speaking skills in large and small groups
- + Develop advanced academic research skills
- + Develop critical thinking through the study of Western culture and pop fiction
- + Explore the creative process through experiential learning
- + Establish personal networks by meeting key people from universities, colleges, and the world of arts
- + Benefit from cultural field trips in the Quebec City area
- + Enjoy dynamic and unique guest lectures by authors and artists
- + Join a tight-knit community of like-minded people
- + Form lifelong memories and friendships through exchanges, student trips, and ALC get-togethers

Your future

Your studies can lead to a wide range of fields and careers, including:

- + Education at the elementary or secondary levels
- + Teaching English as a Second Language (ESL)
- + International relations
- + Public relations
- + Communication studies
- + Journalism and broadcast media
- + Law
- + Translation
- + Creative writing
- + Professional writing
- + Linguistics and languages
- + Literary studies
- + English studies
- + French studies
- + Hispanic studies

> *Learn more*



Want to apply?

You must satisfy the college general admission requirements.

Pre-university double DEC

In addition to our regular programs and profiles, we offer three-year DEC's that allow you to combine two programs in one.

The Double DEC is for students who are interested in having access to a wider variety of program options after college. A double DEC also provides the opportunity for a more profound exploration of topics than possible with a single DEC.

Some courses that you will take during your double DEC will count for both programs. In your last semester, you will complete the comprehensive assessments for each program.

200.17

Science + Social Science

If you're considering university programs in both science- and social science-related fields, or in a field connected to both, this double DEC may be a good choice for you.

This Double DEC will satisfy pre-requisites for virtually all university programs. It also gives you extra time and information to help you choose a career. For some careers, such as environmental law, a grounding in both the physical and social sciences may be especially useful.

Other advantages include the fact that the program has fewer courses per semester and fewer weekly course hours than either the Science or Social Science programs. The Double DEC also has fewer science and math courses per semester. A reduced course load gives the possibility of earning a higher R-score. In addition, you have an extra year to study in English before university.

Depending on the university, it may be necessary to take six courses per semester and complete a Double DEC in six semesters if you wish to seek admission to medicine or dentistry.

There are no specific profiles in the Science + Social Science Double DEC. However, you can tailor your choice of upper-level Science and Social Science courses to fit your university plans. In addition, the math courses taken for Science also meet the requirements of the Commerce or Math profiles of the Social Science program.

> *For a list of courses required to complete this Double DEC, scan the QR code.*

> *Learn more*



Want to apply?

Students must satisfy the college general admission requirements and have the following pre-requisites:

- + TS 5 or SN 5 Math
- + Chemistry
- + Physics

200.18

Science + ALC

(Arts, Literature & Communication)

If you're considering university programs in both science- and ALC- related fields, or in a field connected to both, this double DEC may be a good choice for you.

This Double DEC will satisfy the pre-requisites for many university programs and will give you extra time and information to help you choose a career.

Other advantages include the fact that the program has an average of fewer courses per semester than the ALC program and fewer science and math courses per semester than the Science program. A reduced course load gives the possibility of earning a higher R-score. In addition, you have an extra year to study in English before university.

Depending on the university, it may be necessary to take six courses per semester and complete a Double DEC in six semesters if you wish to seek admission to medicine or dentistry.

You can tailor your choice of upper-level Science courses to fit your university plans, much as students choose between the Health Science and Pure & Applied Science profiles in the regular Science program. For your language courses, the Languages option that we offer allows you to study in English, French and Spanish.

Our two profiles are based on whether you are ready for Spanish I or Spanish II. A course credit beyond Spanish II may also be given, depending on our assessment of your level.

> For a list of courses required to complete this Double DEC, scan the QR code.

> Learn more



Want to apply?

Students must satisfy the college general admission requirements and have the following pre-requisites:

- + TS 5 or SN 5 Math
- + Chemistry
- + Physics

300.16

Social Science + ALC (Arts, Literature & Communication)

If you're considering university programs in both social science- and ALC-related fields, or in a field connected to both, this double DEC may be a good choice for you.

This Double DEC will satisfy the prerequisites for a greater number of university programs and will give you extra time and information to help you choose a career.

There are university programs (e.g., International Studies) where a broader perspective and more extensive grounding in both the social sciences and languages is better preparation for further academic work than either program alone.

Another advantage of this Double DEC is that it has fewer courses per semester on average than the ALC Program and the Social Science Program. A reduced course load provides the possibility of earning a higher R-score. In addition, students have an extra year (and more courses) to improve their English-language skills. This can be especially beneficial if your previous studies were completed in French.

Our Profiles

St. Lawrence offers two profiles in the Social Science + ALC Double DEC. Both profiles allow you to tailor your choice of Social Science courses to fit your university plans. The profiles are determined by the language options, which allow students to study English, French and Spanish. Our two profiles are based on whether you have previous experience studying Spanish.

Students wishing to complete the Commerce or Mathematics profiles from Social Science will need to make sure they take the following math courses: 201-115-LW Differential Calculus, 201-214-LW Integral Calculus and 201-224-LW Linear Algebra, in that order.

> For a list of courses required to complete this Double DEC, scan the QR code.

> Learn more



Want to apply?

You must satisfy the college general admission requirements. If you choose the Commerce Profile or Mathematics Profile from Social Science, you must have the following pre-requisite:

- + TS 5 or SN 5 Math.

Take the upper hand

Julien Babineau
P.W. Sims Business student
2024-2025 Student Association President



P.W. Sims Business program

Our career program in Accounting and Management Technology was named to honour a well-respected Quebec City businessman, P.W. Sims, whose legacy finances activities to enrich students' learning experience.

Our program

**Why should you consider a three-year program?
The program provides two main advantages.**

- + Students study business in-depth while at Cegep, taking more than 20 business-related courses in such areas as accounting, marketing, human resources management and international business. The practical focus includes classroom use of laptops (required at the start of first year), an information technology course each year, contact with local businesses, as well as two internships: one at the end of second year (for three weeks) and one at the end of third year (for six weeks). Students who would prefer to also study non-business fields before beginning business studies at university should consider the Commerce Profile of our Social Science Program (see p. 22).
- + Graduates have many options upon completing their DEC. They can enter the workforce directly in a variety of business-related careers or they can continue their studies at university. Employers often contact the college to hire graduates who can work in English and French. St. Lawrence has DEC-BAC arrangements with several universities, so that graduates with strong academic results from their DEC program can complete a bachelor's degree at university more quickly.

Your future

Your studies can lead to a wide range of academic opportunities and careers, including:

- + Accounting
- + Auditing
- + Communications
- + Entrepreneurship, Business Start-Up
- + Event Management
- + Finance
- + Human Resource Management
- + Industrial Relations
- + International Business
- + Law (e.g. Commercial Law)
- + Marketing
- + Operations Management
- + Sales
- + Tourism

> *Learn more*



Want to apply?

You must satisfy the college general admission requirements. If you choose the Workforce profile, the prerequisite is CST 5, TS 4 or SN 4 Math. If you choose the University profile (with Math), the prerequisite is TS 5 or SN 5 Math.

410.BO **P.W. Sims Business program**

Our profiles

Your choice of profile depends on whether you are considering university studies or wish to directly enter the workforce upon graduating. We have a profile for both situations – the University profile and the Workforce profile.

410.WK Workforce Profile

Students who want to begin their career immediately after graduating can opt for our Workforce Profile. In the Workforce Profile, students choose two complementary courses instead of university math prerequisites. Those who don't hold a certificate will take one additional course.

410.UN University Profile (with math)

Students who are considering university business studies should opt for our University Profile. The University Profile includes two complementary math courses to meet university admission requirements in business. Those who don't hold a certificate will take one additional course.

For students with strong academic results, we have agreements with a number of universities to recognize courses from our program:

- + **Université du Québec à Trois-Rivières**
BAC en Sciences comptables (30 credits)
- + **Université du Québec à Rimouski**
BAC en Sciences comptables (30 credits)
BAC en Administration (30 credits)
- + **Université Laval**
BAC en Administration des affaires (27 credits)
BAC en Administration des affaires, expertise comptable (24 credits)
BAC en Relations industrielles (15 credits)
BAC en Économie (24 credits)
- + **Bishops University**
Williams School of Business (up to 30 credits)
- + **Concordia University**
John Molson School of Business (15 credits)
- + **Griffith University (Australia)**
Bachelor of Business (DEC-BAC)
Bachelor of Business, extended accounting (advanced standing)
Bachelor of International Tourism & Hotel Management

> *For full course sequences, visit our website.*



Break barriers

François Sévigny
Dean of Academic Organization and Registrar

Tourism program

In partnership with :



This bilingual three-year career program offered by Cégep Limoilou in collaboration with St. Lawrence will allow you to build your skills in event management, the development of tourism services and products, and marketing.

Our program

This unique program offers many advantages :

- + A bilingual pathway that's unique in the province of Quebec
- + A strong focus on sustainable tourism
- + Teachers with broad experience in the tourism industry
- + A five-week internship in the final year of the program
- + Direct contact with the industry during all three years of the program, through a variety of volunteer opportunities, guest speakers, site visits and field trips
- + The opportunity to learn a third language
- + International summer internships available to all students through Cégep Limoilou's ATE Monde program
- + The possibility of an academic exchange in Belgium at the Haute École Charlemagne or in France at the Lycée Honoré-Romane d'Embrun
- + Promising careers after three years of studies (there is a shortage of qualified bilingual personnel in Tourism)
- + The opportunity to obtain a bachelors degree from Griffith University, located on the beautiful Gold Coast of Australia,

> *Learn more*



Want to apply?

Admission to this program is handled through Cégep Limoilou, a member of the Service régional d'admission au collégial de Québec (SRACQ): cegeplimoilou.ca

You can find the course grid and apply online on the SRACQ.



Stay sharp

Marina Aaron
2024 AEC graduate
Administration Technician

Continuing Education

Tomorrow's success starts with the educational choices you make today. St. Lawrence's human-scale approach and quality courses offer you new opportunities to help you reach your goals. Whether you are interested in advancing or changing your career path, enhancing your competencies, or enriching your life, our Continuing Education services can help you fulfill your needs.

Some of the available course options

AEC in Business Administration

- + Unique bilingual program
- + Discover accounting, management, marketing, customer service, human resources and more
- + Creates well-rounded workers for any department in small or large businesses and organizations
- + 960 hours over 3 semesters, including a 3-week final internship
- + Evening and weekend schedule allows family/work/studies balance

**Already have some experience?
Contact us to get it recognized! (RAC
recognition of acquired competencies)**

Quebec Local Tour guide

- + A hybrid program that combines our unique e-learning platform and many practical activities on the field and at school.

English and Spanish for business

- + Courses tailored to your needs (beginner to advanced levels). Intensive and immersive courses available.

English courses at \$5 an hour

Group courses

- + Courses available
 - + Improving your communication skills at work
 - + Improving your written and speaking skills at work
 - + Improving your customer service at work
- + 30 to 36 hours of class time
- + Provided in collaboration with Services Quebec

Clientele

- + Individuals working for an employer or who are self-employed
- + Visit our website to see conditions of admissibility.

> *Learn more*



Questions?

See all our programs and descriptions by scanning the QR code:

Be one of us

Our admissions are processed directly at St. Lawrence. We are not a member of the Service Régional d'admission au collégial de Québec (SRACQ). This means you can apply to both St. Lawrence and other Cegeps before choosing your college.

Here are the three steps to apply to one of our regular day programs:

1.

Complete the **Online application form under the future students tab on our website and pay the application fees** at slc.qc.ca before the following deadlines:

- + **March 1st** for the fall semester beginning in August (our application system is open from mid-January to March 1st)
- + **November 1st** for the winter semester beginning in January (our application system is open from mid-September to November 1st)

2.

Upload the required documents to the admission system by the date indicated in your application confirmation.

The required documents depend on your situation. Details will be available on your application confirmation.

3.

Complete the online **English Level Assessment**. If you are graduating from a French high school, you will receive a link along with email instructions following your application.

This one-hour test allows us to ensure you are ready for College studies in English.

> *Learn more*



For any questions, contact the Admissions Office.

E-mail: admissionslc@crcmail.net
Telephone: 418 656.6921 ext. 4232



081.06

DEC Pathway

If you don't have the prerequisites for the program of your choice, or if you don't know which program you want to go into, the DEC Pathway might be right for you.

The DEC Pathway consists of a flexible mix of the following:

- + Reduced course load
- + Teacher mentoring
- + Student peer tutoring
- + Workshops covering various skills needed to succeed in college

After being admitted to the DEC Pathway, students are invited to contact their Academic Advisor to plan their studies.

> *Learn more*



Want to apply?

You must satisfy the college general admission requirements.



St. Lawrence
CEGEP CHAMPLAIN

**You have questions?
We have answers!**

Learn more about our Open House
by using the QR code below



**Vous avez des questions?
Nous avons des réponses!**

Pour en savoir plus sur notre journée Portes ouvertes,
utilisez le code QR ci-dessous.

